



中高端实验室台面专业之选  
Pacemaker of High-end Epoxy Resin Worktop

我们用  做台面

# About Us



## 公司简介 Company Profile

“ONUS欧诺诗”为上海伟贞旗下品牌，自2006年成立以来一直潜心于高端实验室环氧树脂台面研发、生产、销售、服务。欧诺诗为美国SEFA协会会员，获得了ISO9001认证、多项专利认证。欧诺诗拥有独立自主的研发、生产、加工基地，为出产稳定、高品质的环氧树脂台面奠定了坚实的基础。多年来，欧诺诗环氧板已经广泛被教育、科研、医疗、制药、环保、石油化工、检验检测等领域所采用，产品远销美国、东南亚、中东等多个国家和地区。

欧诺诗秉承匠心造精品的经营理念，研发团队在保证品质的基础上不断开发新产品，源源不断地为公司产品线注入新的血液，截止目前，公司已拥有超过30多款一体成型模具，能够为用户提供丰富多样的选择空间，满足绝大多数用户个性化产品定制需求。与此同时，欧诺诗分别在华南、华北、上海、湖北、山东等地设立了销售服务网点，拥有完善的售后服务体系，能够快速高效地为广大用户提供设计咨询、售后维护等服务。

ONUS is the brand of Shanghai Weizhen Industrial Co.,Ltd , established in 2006, we are specialized in production, sales and service for High-end laboratory epoxy resin worktops. Our company was member of SEFA, and received the certificate of ISO 9001 and other patent as well . Our factory is about 20 thousands sq.m., for research, production by ourselves , annual production up to 100 thousands sq.m., all staffs are more than 100 people,so we have enough ability to supply the best quality epoxy resin worktops for every of our customer.For many years, ONUS epoxy resin worktop has been widely adopted in education , scientificresearch, medical, pharmaceutical,environmental protection and other fields.

Besides the Chinese market, ONUS epoxy resin worktops sale to USA, Southeast Asia,Middle East, Russia etc. From our building company, ONUS always prompt the development of laboratory industry and leading the Chinese laboratory worktops.



连续多年 出口量持续增长



[www.onuschina.com](http://www.onuschina.com)

我们用  做台面



欧诺诗®  
ONUS

欧诺诗环氧树脂板由环氧树脂、固化剂与高纯度超细石英粉一次性混合浇筑后，经高温烘焙、分子结晶，一体成型。因环氧树脂板具有其特有优异性能，多年来在国际市场上占有率一直持续增长，在美国本土更是达60%以上。晶岩系列环氧板的研发成功和上市，更使传统环氧树脂板在性能得到进一步提升。



### 碟形一体成型

Dish-Shaped Integral

四周阻水边一体成型，绝不脱落，有效阻止液体外溢，拥有30余款模具，满足绝大部分需求。  
The molded marine edge is effectively prevent the spill, never fall off, we have more than 30 moulds for you to choose.



### 材质一体透芯

Monolithic

由里及表整个台面材质相同，侧面无需特殊处理，遇到损伤经专业人员修复如新。  
It is same material for inside and surface, and have no special process for cutting edge. It is repairable by professional staff when damaged. and it can be repaired as original when it is damaged.



### 耐高温，抗骤冷骤热

High temperature resistance

能够承受实验室常见的高温，遇明火不可燃、不起泡、不断裂，遇骤冷骤热不会炸裂。  
It is able to withstand common laboratory temperature, and it is not flammable, has no bubbles and does not break when temperature change.



### 抗腐蚀

Anti-corrosion

对实验室常用的化学酸碱溶剂有超强的耐腐蚀能力。  
It has superior corrosion resistance to acid and alkali solvents commonly used in laboratory.



### 规格大、拼缝少

Jointless

可操作实验台面空间大，实验操作位置不受影响！  
Standard slabs size is large, laboratory operate site is not be affect.



### 安全环保

Safety and environmental protective

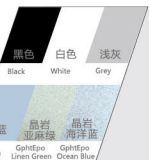
健康环保、零甲醛释放、零辐射。  
It is non-toxic and tasteless, no formaldehyde, no radiation.



### 经久耐用

Durable

防潮性好、不膨胀、不变形、抗撞击、耐污染、易清洁，使用年限长。  
It is absolute moisture-proof, the smoothly and non-porous surface, it won't foam and crack and not hidden bacteria. Long life and stable.



### 定型定色 (各型欧诺诗台面及水槽)

Customize Choice

欧诺诗环氧树脂板拥有更多规格和颜色，同时可为您提供“定型定色”服务，请您致电 021-51691848！  
ONUS epoxy resin worktops have many of sizes and colors for choose, supply the customize design and color for clients as well. Please feel free to call us for more details: 021-51691848!



## 平板

### SLAB(ONUS-AB)

产品编码(No.)	规格 Size (mm)	厚 Th (mm)
ONUS-AB9872	2480×1800	16/19/25
ONUS-AB9862	2480×1580	16/19/25

#### 可选加边工艺

#### Available Edge Processing Technics



加厚边  
Deco edge



L型加边  
L-shaped edge



上加边  
Marine edge



倒角  
Chamfer



止水线  
Anti-overflow line

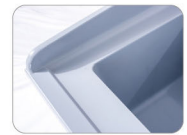
注：如需四周阻水，建议  
选择一体成型碟形台面  
If you want to block water  
around, we suggest you can  
choose the molded marine  
edge worktops.



## 碟形一体成型水槽台面

### SINK TOP(ONUS-ST)

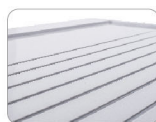
产品编码(No.)	规格 Size (mm)	厚 TH (mm)
ONUS-ST4030	1022×778	25
ONUS-ST6030	1532×778	25
ONUS-ST2626	650×650	25
ONUS-STd7238	1840×960	25



## 碟形一体成型带导流槽水槽台面

### SINKTOP WITH DRAIN GROOVES(ONUS-SD)

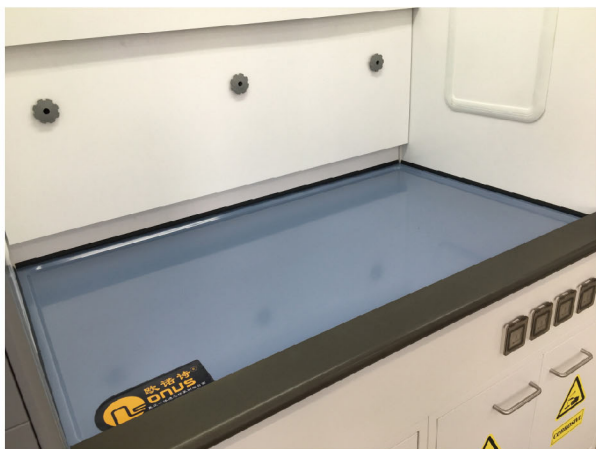
产品编码(No.)	规格 Size (mm)	厚 TH (mm)
ONUS-SD6030	1514×776	25



### 碟形一体成型通风柜台面

#### FUME HOOD WORKTOP (ONUS-FI/FW)

产品编码 (No.)	规格 Size (mm)	厚 TH (mm)
ONUS-FI4030	1022×778	25
ONUS-FI5230	1320×786	25
ONUS-FI6430	1630×790	25
ONUS-FI6537	1643×945	25
ONUS-FW5036	1270×913	32
ONUS-FW5030	1270×764	32
ONUS-FW6230	1564×778	25/32
ONUS-FW6232	1564×820	25/32
ONUS-FW7230	1864×778	25/32
ONUS-FW7232	1864×820	25/32



### 环氧树脂水槽

#### SINK (ONUS-US/DS)

产品编码 (No.)	规格 Size (mm)
ONUS-US1512	393×317×260
ONUS-US1615	500×400×300
ONUS-US3215	810×400×400
ONUS-DS2016	524×425×300
ONUS-DS1613	415×340×260



不带边沿水槽 UNDERMOUNT SINK



带边沿水槽 DROP IN SINK

### 碟形环氧树脂中央台面

#### EPOXY RESIN ISLAND BENCH WORKTOPS (ONUS-CB)



产品编码 (No.)	规格 Size (mm)
ONUS-CB3050	3050×1500×25



不慎撒落至中央台的液体可有效流入集导液槽，且集导液槽无任何死角，清洁非常方便。 Any of liquids can flow into groove, and it's very easy for clean groove.

碟边弧度设计符合人体工学原理，当工作人员坐在工作台边手肘放在碟边时无压迫感。 Radius edge is conform to ergonomics, it's comfortable for staff.

整个中央台无任何拼缝，外观优美，操作空间大。 No joints, large operate space, nice appearance



### 转角台台面

#### CORNER BENCH WORKTOP(ONUS-CB)

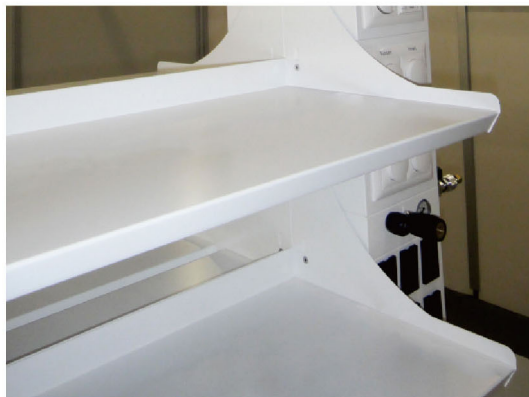
产品编码 (No.)	规格 Size (mm)	厚 TH (mm)
ONUS-CB4040	1023×1023	25



### 环氧树脂水杯

#### CUPSINK (ONUS-CS)

产品编码 (No.)	规格 Size (mm)
ONUS-CS0704	190×114×242
ONUS-CS1005	260×140×220



### 试剂架层板

#### REAGENT SHELF(ONUS-RS)

产品编码 (No.)	规格 Size (mm)	厚 TH (mm)
ONUS-RS5915	1500×380	32

### 环氧纤瓷板

#### LINING SHEET (ONUS-LS)

产品编码 (No.)	规格 Size (mm)	厚 TH (mm)
ONUS-LS9648	2450×1300	5



注：耐高温及常用化学试剂，适用于通风柜内衬板。  
Resist high temperature and chemical reagents, it is apply to the fume hood lining sheet.



# 晶岩系列 <sup>NEW</sup> 环氧树脂台面

科技新材料“石墨烯”成功应用于实验室台面领域

★石墨烯具有优异的光学、电学、力学特性，在环氧复合过程中产生的结晶体，因其特殊的颜色，使欧诺诗晶岩系列环氧树脂台面获得独特的色彩呈现。

★石墨烯具有很高的热传导性，应运于环氧树脂台面后，有效地提高了台面的耐高温性能。

★以石墨烯作为晶核，与环氧分子在高温复合作用下，形成高密度高强度复合结晶体，能明显提高成型材料硬度，使材料呈现更好的耐磨性能。
















Shocking "GRAPHENE" successful apply in laboratory worktops

★ GRAOHENEN have excellent optics, mechanics and electricity advantages. Generate crystalline during with epoxy resin recombination, therefore ONUS GphEpo worktop has unique color presentation result from it.

★ Graphene has high heat conductivity, when it been used in epoxy resin worktop, it improves heat resistance property efficiently.

★ Graphene as crystall core, form high density and high strength crystalline during combine with epoxy resin molecule, it can improve product hardness obviously, and has good property on resisting scratches.

## 部分合作伙伴 Selected partners

 陶氏	 We create chemistry	 巨化集团公司 JUHUA GROUP CORPORATION	 中国药检	 友達光電 AU Optronics
 中国石油		 中国石化 SINOPEC		 益海嘉里
				
 NOVARTIS	 COVANCE THE DEVELOPMENT SERVICES COMPANY	 江中集团 JZIT		 DIKMA A reliable partner for your lab
				
				 CTI 华测检测 CENTRE FOR TEST TECHNOLOGICAL



高端一体透芯环氧树脂台面  
High-end Monolithic Epoxy Resin Worktop

上海伟贞实业有限公司  
Shanghai Weizhen Industrial Co.,Ltd

上海市昌吉路156弄大众创意园5号  
Add:Building 5,No.156 Changji Rd.Shanghai

Tel:+86-021-51691848

Fax:+86-021-51685648

E-mail:onus@onuschina.com

www.onuschina.com

因产品改进和更新需要，当本样册内产品介绍与实物不符时，请以实物为准，敬请谅解！

Due to product improvements and updates, when this contributes presents product introduction does not accord with real, please in kind prevail, thanks for understanding!



我们用  做台面

2020 第二版





## Test Report

No.: SHHL1912506079FT

Date: JAN. 02, 2020

Page: 1 of 7

SHANGHAI WEIZHEN NEW MATERIAL TECHNOLOGY CO., LTD  
BUILDING5, NO.156 CHANGJI RD, JIADING DISTRICT, SHANGHAI

Sample Description : ONUS EPOXY RESIN WORKTOPS(SHEET, DISHED)  
\*\*\*\*\*  
Sample Receiving Date : DEC. 23, 2019  
Testing Period : DEC. 23, 2019 TO JAN. 02, 2020  
Test Performed : SELECTED TEST(S) AS REQUESTED BY APPLICANT  
Test Requested : CHEMICAL/ STAIN RESISTANCE (SEFA 3-2010  
RECOMMENDED PRACTICES FOR LABORATORY  
WORK SURFACES CLAUSE 2.1)  
Test Result(s) : FOR FURTHER DETAILS, PLEASE REFER TO THE  
FOLLOWING PAGE(S)  
Conclusion : THE SUBMITTED SAMPLE MET THE TEST  
REQUIREMENT.

Signed for and on behalf of  
SGS-CSTC Standards Technical Services (Shanghai) Co., Ltd.



Melody Zhang  
Authorized Signatory



Unless otherwise agreed in writing, this document is issued by the Company subject to its General Conditions of Service printed overleaf, available on request or accessible at <http://www.sgs.com/en/Terms-and-Conditions.aspx> and, for electronic format documents, subject to Terms and Conditions for Electronic Documents at <http://www.sgs.com/en/Terms-and-Conditions/Terms-e-Documents.aspx>. Attention is drawn to the limitation of liability, indemnification and jurisdiction issues defined therein. Any holder of this document is advised that information contained hereon reflects the Company's findings at the time of its intervention only and within the limits of Client's instructions, if any. The Company's sole responsibility is to its Client and this document does not exonerate parties to a transaction from exercising all their rights and obligations under the transaction documents. This document cannot be reproduced except in full, without prior written approval of the Company. Any unauthorized alteration, forgery or falsification of the content or appearance of this document is unlawful and offenders may be prosecuted to the fullest extent of the law. Unless otherwise stated the results shown in this test report refer only to the sample(s) tested and such sample(s) are retained for 30 days only.  
Attention: To check the authenticity of testing/inspection report & certificate, please contact us at telephone: (86-755) 8307 1443, or email: [CN.Doccheck@sgs.com](mailto:CN.Doccheck@sgs.com)  
SGS-CSTC Standards Technical Services (Shanghai) Co., Ltd. 4<sup>th</sup> Building, No.889, Yishan Road, Xuhui District Shanghai, China 200233 t (86) 400 960 9661 f (86-21) 6115 6899 www.sgs.com.cn  
中国·上海·徐汇区宜山路889号4号楼 邮编: 200233 t (86) 400 960 9661 f (86-21) 6115 6899 e [sgs.china@sgs.com](mailto:sgs.china@sgs.com)



# Test Report

No.: SHHL1912506079FT

Date: JAN. 02, 2020

Page: 2 of 7

## Test Conducted:

### 2.1 Chemical/ Stain resistance

Date Tested: Dec. 30, 2019

Condition of Test Sample: Production Samples

#### Description of Samples:

Part Description:

Material Submitted: /

Material Specification: SEFA 3-2010

#### Test Procedure:

Test Method: SEFA 3-2010 Clause 2.1

#### Method A:

For volatile chemicals – A cotton ball, saturated with the test chemical, was placed in a one ounce bottle (10mm x 7mm test tube or similar container). The container was inverted on the test material surface for a period of 24 hours.

Temperature of test: 23° +/- 2°C (73° +/- 4°F). This method was used for the organic solvents..

#### Method B:

For non-volatile chemical – Five drop of the test chemical were placed on the test material surface. The chemical was covered with a watch glass for a period of 24hours.

Temperature of test: 23° +/- 2°C (73° +/- 4°F) This method was used for chemicals listed below other than solvent.

Rating Scale:  
surface.

- 0 No detectable change in the material
- Level 1 Slight detectable change in color or gloss but no change in function or life of the surface
- Level 2 A clearly discernible change in color or gloss but no significant impairment of surface life or function
- Level 3 Objectionable change in appearance due to discoloration or etch, possibly resulting in deterioration of function over an extended period time.

Number of Samples Tested: 1 shelf



Unless otherwise agreed in writing, this document is issued by the Company subject to its General Conditions of Service printed overleaf, available on request or accessible at <http://www.sgs.com/en/Terms-and-Conditions.aspx> and, for electronic format documents, subject to Terms and Conditions for Electronic Documents at <http://www.sgs.com/en/Terms-and-Conditions/Terms-e-Documents.aspx>. Attention is drawn to the limitation of liability, indemnification and jurisdiction issues defined therein. Any holder of this document is advised that information contained hereon reflects the Company's findings at the time of its intervention only and within the limits of Client's instructions, if any. The Company's sole responsibility is to its Client and this document does not exonerate parties to a transaction from exercising all their rights and obligations under the transaction documents. This document cannot be reproduced except in full, without prior written approval of the Company. Any unauthorized alteration, forgery or falsification of the content or appearance of this document is unlawful and offenders may be prosecuted to the fullest extent of the law. Unless otherwise stated the results shown in this test report refer only to the sample(s) tested and such sample(s) are retained for 30 days only.  
**Attention:** To check the authenticity of testing/inspection report & certificate, please contact us at telephone: (86-755) 8307 1443, or email: [CN.Doccheck@sgs.com](mailto:CN.Doccheck@sgs.com)

SGS-CSTC (Shanghai) Technical Services Co., Ltd.      4<sup>th</sup> Building, No.889, Yishan Road, Xuhui District Shanghai, China 200233      t (86) 400 960 9661      f (86-21) 6115 6899      www.sgs.com.cn  
 中国·上海·徐汇区宜山路889号4号楼 邮编: 200233      t (86) 400 960 9661      f (86-21) 6115 6899      e [sgs.china@sgs.com](mailto:sgs.china@sgs.com)

# Test Report

No.: SHHL1912506079FT

Date: JAN. 02, 2020

Page: 3 of 7

Deviation:

Acceptance Criteria:

Laboratory Grade work surface finishes shall result in no more than 4 Level 3 conditions

Results:

Test No.	Chemical	Method	Rating	Comments
1	Acetate, Amyl	A	0	/
2	Acetate, Ethyl	A	0	/
4	Acetone	A	0	/
6	Alcohol, Butyl	A	0	/
7	Alcohol, Ethyl	A	0	/
8	Alcohol, Methyl	A	0	/
10	Benzene	A	0	/
11	Carbon Tetrachloride	A	0	/
12	Chloroform	A	0	/
14	Cresol	A	0	/
15	Dichloroacetic Acid	A	1	/
16	Dimethylformamide	A	0	/
17	Dioxane	A	0	/
18	Ethyl Ether	A	0	/
19	Formaldehyde, 37%	A	0	/
21	Furfural	A	3	/
22	Gasoline	A	0	/
27	Methyl Ethyl Ketone	A	0	/
28	Methylene Chloride	A	0	/
29	Mono Chlorobenzene	A	0	/
30	Naphthalene	A	0	/
34	Phenol, 90%	A	0	/
46	Toluene	A	0	/
47	Trichloroethylene	A	0	/



Unless otherwise agreed in writing, this document is issued by the Company subject to its General Conditions of Service printed overleaf, available on request or accessible at <http://www.sgs.com/en/Terms-and-Conditions.aspx> and, for electronic format documents, subject to Terms and Conditions for Electronic Documents at <http://www.sgs.com/en/Terms-and-Conditions/Terms-e-Documents.aspx>. Attention is drawn to the limitation of liability, indemnification and jurisdiction issues defined therein. Any holder of this document is advised that information contained hereon reflects the Company's findings at the time of its intervention only and within the limits of Client's instructions, if any. The Company's sole responsibility is to its Client and this document does not exonerate parties to a transaction from exercising all their rights and obligations under the transaction documents. This document cannot be reproduced except in full, without prior written approval of the Company. Any unauthorized alteration, forgery or falsification of the content or appearance of this document is unlawful and offenders may be prosecuted to the fullest extent of the law. Unless otherwise stated the results shown in this test report refer only to the sample(s) tested and such sample(s) are retained for 30 days only.  
**Attention:** To check the authenticity of testing/inspection report & certificate, please contact us at telephone: (86-755) 8307 1443, or email: [CN.Doccheck@sgs.com](mailto:CN.Doccheck@sgs.com)  
 4<sup>th</sup> Building, No.889, Yishan Road, Xuhui District Shanghai, China 200233 t (86) 400 960 9661 f (86-21) 6115 6899 www.sgs.com.cn  
 中国·上海·徐汇区宜山路889号4号楼 邮编: 200233 t (86) 400 960 9661 f (86-21) 6115 6899 e [sgs.china@sgs.com](mailto:sgs.china@sgs.com)



# Test Report

No.: SHHL1912506079FT

Date: JAN. 02, 2020

Page: 4 of 7

Test No.	Chemical	Method	Rating	Comments
48	Xylene	A	0	/

Test No.	Chemical	Method	Rating	Comments
3	Acetic Acid, 98%	B	0	/
5	Acid Dichromate, 5%	B	0	/
9	Ammonium Hydroxide, 28%	B	0	/
13	Chromic Acid, 60%	B	0	/
20	Formic Acid, 90%	B	0	/
23	Hydrochloric Acid, 37%	B	0	/
24	Hydrofluoric Acid, 48%	B	3	/
25	Hydrogen Peroxide, 30%	B	0	/
26	Iodine, Tincture of	B	0	/
31	Nitric Acid, 20%	B	0	/
32	Nitric Acid, 30%	B	0	/
33	Nitric Acid, 70%	B	2	/
35	Phosphoric Acid, 85%	B	0	/
36	Silver Nitrate, Saturated	B	0	/
37	Sodium Hydroxide, 10%	B	0	/
38	Sodium Hydroxide, 20%	B	0	/
39	Sodium Hydroxide, 40%	B	0	/
40	Sodium Hydroxide, Flake	B	0	/
41	Sodium Sulfide, Saturated	B	0	/
42	Sulfuric Acid, 33%	B	0	/
43	Sulfuric Acid 77%	B	0	/



Unless otherwise agreed in writing, this document is issued by the Company subject to its General Conditions of Service printed overleaf, available on request or accessible at <http://www.sgs.com/en/Terms-and-Conditions.aspx> and, for electronic format documents, subject to Terms and Conditions for Electronic Documents at <http://www.sgs.com/en/Terms-and-Conditions/Terms-e-Documents.aspx>. Attention is drawn to the limitation of liability, indemnification and jurisdiction issues defined therein. Any holder of this document is advised that information contained hereon reflects the Company's findings at the time of its intervention only and within the limits of Client's instructions, if any. The Company's sole responsibility is to its Client and this document does not exonerate parties to a transaction from exercising all their rights and obligations under the transaction documents. This document cannot be reproduced except in full, without prior written approval of the Company. Any unauthorized alteration, forgery or falsification of the content or appearance of this document is unlawful and offenders may be prosecuted to the fullest extent of the law. Unless otherwise stated the results shown in this test report refer only to the sample(s) tested and such sample(s) are retained for 30 days only.

Attention: To check the authenticity of testing/inspection report & certificate, please contact us at telephone: (86-755) 8307 1443, or email: [CN.Doccheck@sgs.com](mailto:CN.Doccheck@sgs.com)

SGS-CSTC Shanghai Technical Services Co., Ltd. 4<sup>th</sup> Building, No.889, Yishan Road, Xuhui District Shanghai, China 200233 t (86) 400 960 9661 f (86-21) 6115 6899 www.sgs.com.cn  
 中国·上海·徐汇区宜山路889号4号楼 邮编: 200233 t (86) 400 960 9661 f (86-21) 6115 6899 e [sgs.china@sgs.com](mailto:sgs.china@sgs.com)

# Test Report

No.: SHHL1912506079FT

Date: JAN. 02, 2020

Page: 5 of 7

Test No.	Chemical	Method	Rating	Comments
44	Sulfuric Acid, 96%	B	2	/
45	Sulfuric Acid, (77%) and Nitric Acid (70%), equal parts	B	2	/
49	Zinc Chloride, Saturated	B	0	/

Totals			
Items	Requirement	No. Reagent with 3 Ratings	Disposition
Volatile Subtotal:	-	1	---
Non-volatile Subtotal:	-	1	---
Grand Totals:	No More than Four Level 3 Conditions	2	*

**Remark:**

1. Since the data and / or information above division line of front page is provided by the applicant, the relevant results or conclusions of this report are only made for these data and / or information, SGS is not responsible for the authenticity, integrity and results of the data and information and / or the validity of the conclusion. Testing results only apply to the sample as received.
2. The declaration of conformity is only based on the actual value of laboratory activity, measurement uncertainty of the results not take into account.



Unless otherwise agreed in writing, this document is issued by the Company subject to its General Conditions of Service printed overleaf, available on request or accessible at <http://www.sgs.com/en/Terms-and-Conditions.aspx> and, for electronic format documents, subject to Terms and Conditions for Electronic Documents at <http://www.sgs.com/en/Terms-and-Conditions/Terms-e-Documents.aspx>. Attention is drawn to the limitation of liability, indemnification and jurisdiction issues defined therein. Any holder of this document is advised that information contained hereon reflects the Company's findings at the time of its intervention only and within the limits of Client's instructions, if any. The Company's sole responsibility is to its Client and this document does not exonerate parties to a transaction from exercising all their rights and obligations under the transaction documents. This document cannot be reproduced except in full, without prior written approval of the Company. Any unauthorized alteration, forgery or falsification of the content or appearance of this document is unlawful and offenders may be prosecuted to the fullest extent of the law. Unless otherwise stated the results shown in this test report refer only to the sample(s) tested and such sample(s) are retained for 30 days only.  
Attention: To check the authenticity of testing/inspection report & certificate, please contact us at telephone: (86-755) 8307 1443, or email: [CN.Doccheck@sgs.com](mailto:CN.Doccheck@sgs.com)

SGS-CSTC (Shanghai) Technical Services Co., Ltd.      4<sup>th</sup> Building, No.889, Yishan Road, Xuhui District Shanghai, China 200233      t (86) 400 960 9661      f (86-21) 6115 6899      www.sgs.com.cn  
 中国·上海·徐汇区宜山路889号4号楼 邮编: 200233      t (86) 400 960 9661      f (86-21) 6115 6899      e [sgs.china@sgs.com](mailto:sgs.china@sgs.com)

**Sample Photo:**

Received sample

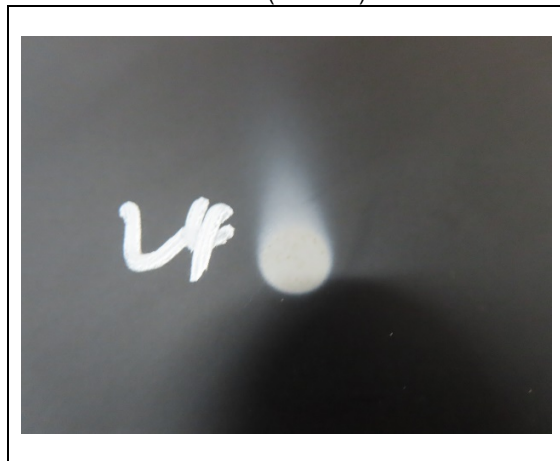
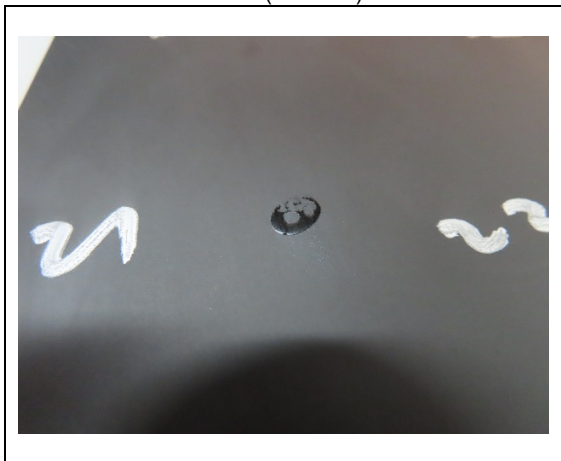


# 21 (Level 3)

After test



# 24 (Level 3)



Unless otherwise agreed in writing, this document is issued by the Company subject to its General Conditions of Service printed overleaf, available on request or accessible at <http://www.sgs.com/en/Terms-and-Conditions.aspx> and, for electronic format documents, subject to Terms and Conditions for Electronic Documents at <http://www.sgs.com/en/Terms-and-Conditions/Terms-e-Documents.aspx>. Attention is drawn to the limitation of liability, indemnification and jurisdiction issues defined therein. Any holder of this document is advised that information contained hereon reflects the Company's findings at the time of its intervention only and within the limits of Client's instructions, if any. The Company's sole responsibility is to its Client and this document does not exonerate parties to a transaction from exercising all their rights and obligations under the transaction documents. This document cannot be reproduced except in full, without prior written approval of the Company. Any unauthorized alteration, forgery or falsification of the content or appearance of this document is unlawful and offenders may be prosecuted to the fullest extent of the law. Unless otherwise stated the results shown in this test report refer only to the sample(s) tested and such sample(s) are retained for 30 days only.  
**Attention:** To check the authenticity of testing/inspection report & certificate, please contact us at telephone: (86-755) 8307 1443, or email: [CN.Doccheck@sgs.com](mailto:CN.Doccheck@sgs.com)

SGS-CSI (Shanghai) Technical Services Co., Ltd. 4<sup>th</sup> Building, No.889, Yishan Road, Xuhui District Shanghai, China 200233 t (86) 400 960 9661 f (86-21) 6115 6899 www.sgs.com.cn  
 中国·上海·徐汇区宜山路889号4号楼 邮编: 200233 t (86) 400 960 9661 f (86-21) 6115 6899 e [sgs.china@sgs.com](mailto:sgs.china@sgs.com)



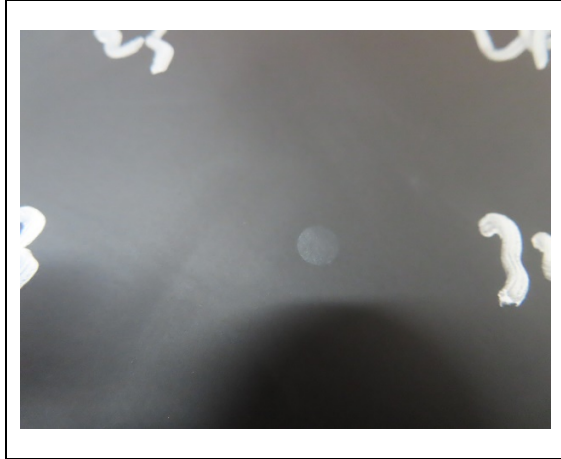
## Test Report

No.: SHHL1912506079FT

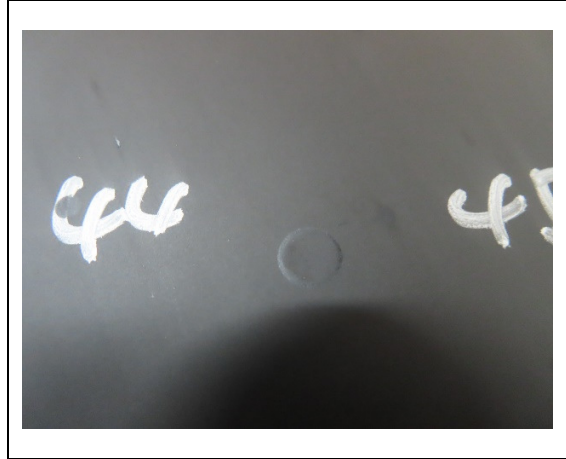
Date: JAN. 02, 2020

Page: 7 of 7

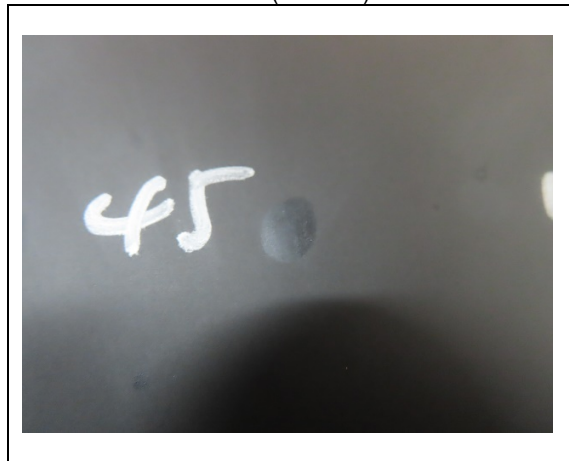
# 33 (Level 2)



# 44 (Level 2)



# 45 (Level 2)



SGS authenticate the photo on original report only

\*\*\*End of Report\*\*\*



Unless otherwise agreed in writing, this document is issued by the Company subject to its General Conditions of Service printed overleaf, available on request or accessible at <http://www.sgs.com/en/Terms-and-Conditions.aspx> and, for electronic format documents, subject to Terms and Conditions for Electronic Documents at <http://www.sgs.com/en/Terms-and-Conditions/Terms-e-Documents.aspx>. Attention is drawn to the limitation of liability, indemnification and jurisdiction issues defined therein. Any holder of this document is advised that information contained hereon reflects the Company's findings at the time of its intervention only and within the limits of Client's instructions, if any. The Company's sole responsibility is to its Client and this document does not exonerate parties to a transaction from exercising all their rights and obligations under the transaction documents. This document cannot be reproduced except in full, without prior written approval of the Company. Any unauthorized alteration, forgery or falsification of the content or appearance of this document is unlawful and offenders may be prosecuted to the fullest extent of the law. Unless otherwise stated the results shown in this test report refer only to the sample(s) tested and such sample(s) are retained for 30 days only.  
**Attention:** To check the authenticity of testing/inspection report & certificate, please contact us at telephone: (86-755) 8307 1443, or email: [CN.Doccheck@sgs.com](mailto:CN.Doccheck@sgs.com)

SGS-CSTC (Technical Services) (Shanghai) Co., Ltd. 4<sup>th</sup> Building, No.889, Yishan Road, Xuhui District Shanghai, China 200233 t (86) 400 960 9661 f (86-21) 6115 6899 www.sgs.com.cn  
 中国·上海·徐汇区宜山路889号4号楼 邮编: 200233 t (86) 400 960 9661 f (86-21) 6115 6899 e [sgs.china@sgs.com](mailto:sgs.china@sgs.com)

***Scientific Equipment & Furniture Association***

**July 1, 2020—June 30, 2021**

**Certificate of Membership**

DAVID J. SUTTON, Executive Director and General Counsel of the Scientific Equipment and Furniture Association, hereby certifies that:

**Shanghai Weizhen Industrial Co., Ltd.**

Building 5, No. 156 Changji Road, Anting Town  
Jiading District, Shanghai 201805 CHINA

is a **SEFA** Executive Member in good standing.

  
David J. Sutton, CAE, JD

Dated: July 1, 2020



**MEMBER**  
since 2015

***WWW.SEFALABS.COM***